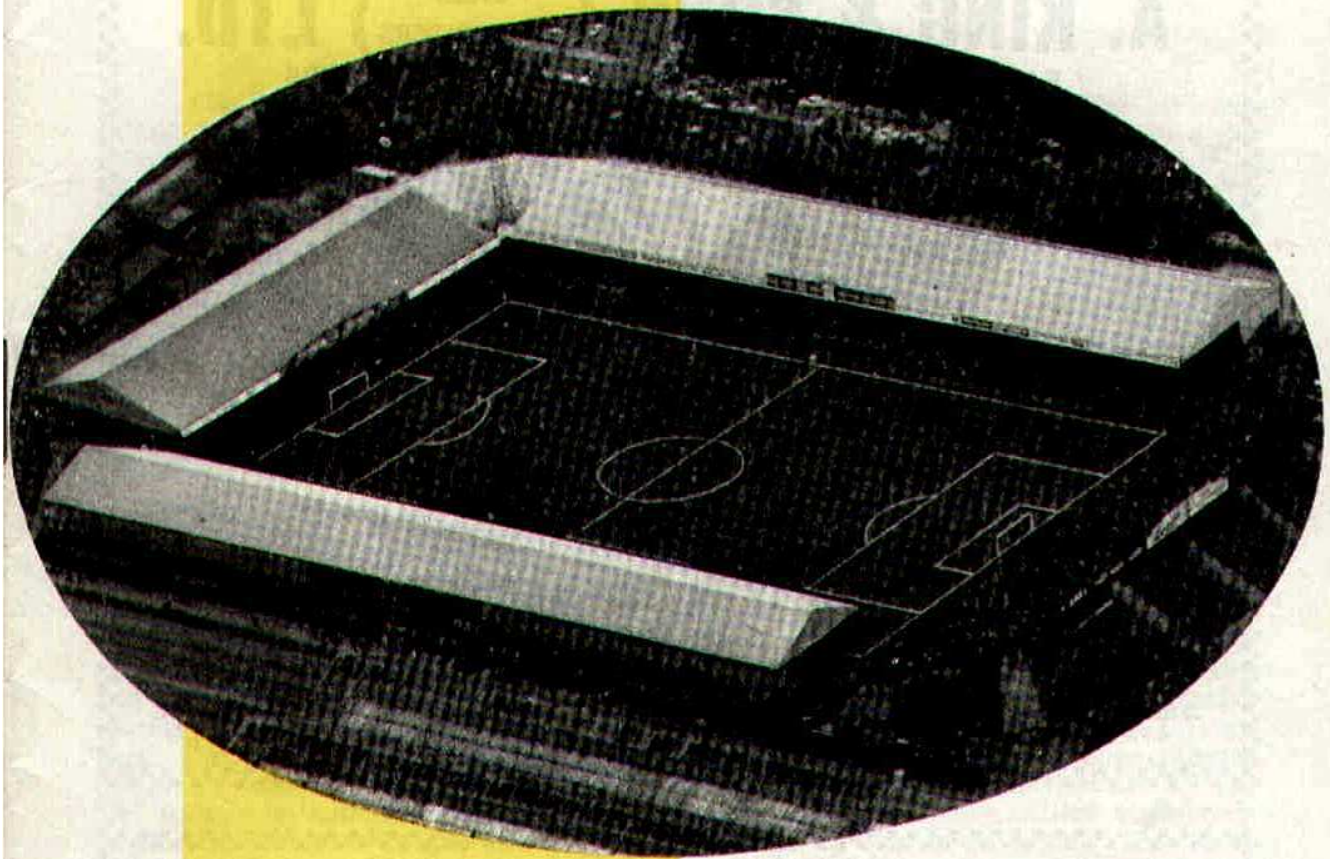


Norwich City Football Club



OFFICIAL
PROGRAMME

6d.

FOOTBALL LEAGUE (Division Two)

NORWICH CITY

v.

SWINDON TOWN

Saturday, 30th January, 1965

Kick-off 3.0 p.m.

CAR REPAIRS — SELF DRIVE HIRE — DRIVING TUITION

FORD MAIN DEALERS
PALACE STREET
NORWICH

Busseys
NORWICH

BRANCH GARAGE
THORPE ROAD
NORWICH

WE SPECIALISE IN NEW AND USED FORDS

For fast efficient service call in
A. KING & SONS (STEEL STOCKHOLDERS) LTD.

EAST ANGLIA'S LARGEST STEEL STOCKHOLDERS

A member of the Metropole Group of Companies

Hall Road
Norwich, Nor54B

Telephone
Norwich 28541/8



H. G. LOMAX & SON LTD.

BUILDERS AND ESTATE DEVELOPERS

HOUSES, BUNGALOWS AND CHALETs (speculative and to order) in course of erection in various parts of Norfolk

THE SPROWSTON JOINERY Co. LTD.

MANUFACTURERS OF HIGH-CLASS JOINERY

ALL ENQUIRIES WELCOMED

ESTIMATES FREE

TELEPHONE
45366/7

School Lane, Sprowston, Norwich

TELEPHONE
45366/7

THOMAS TILLET LTD.

Watchmakers, Jewellers and Silversmiths

Trophies for Sports and Pastimes a Speciality

*Medallists to—
The Norfolk County Football Association
Norwich Business Houses League
Norfolk and Suffolk Football League
Norwich and District Junior Football League
Norwich Minor League — and many others*

17 ST. GILES' STREET
NORWICH NOR 17E

Telephone Norwich 25922

NORWICH CITY FOOTBALL CLUB

F.A. CUP SEMI-FINALISTS, SEASON 1958-59
FOOTBALL LEAGUE CUP WINNERS, SEASON 1961-62

President: THE HON. MRS. PHYLLIS BARCLAY, M.B.E., J.P.

Vice-President: A. SOUTH, J.P.

Directors:

GEOFFREY C. WATLING (*Chairman*) G. F. B. FISH (*Vice-Chairman*)
JAMES L. HANLY ALD. F. C. JEX, O.B.E., J.P. H. ROBINSON, F.C.A.

Hon. Medical Officer: DR. A. WOOLSTONE

Manager: R. ASHMAN

Secretary: A. E. WESTWOOD

Ground: CARROW ROAD

(Telephone 21514)

PROGRAMME NOTES

This afternoon we welcome Swindon Town to Carrow Road. This welcome should have been extended just over a month ago when the Wiltshire Club were due to return the visit we paid them on Boxing Day, but were unable to do so because of the weather conditions. Now, with both clubs out of the F.A. Cup it has been possible to re-arrange the fixture for today. If this afternoon's match is as exciting as the corresponding fixture last season supporters will have their monies' worth. Few of the fans will need reminding how the lads took the points by a goal scored by Jim Oliver with almost the last kick of the game. This goal gave us victory by the odd goal of five and we went on to take another point from the Wiltshire club when we returned their visit two days later. This season we are already two points to the good, thanks to Gordon Bolland's match winning goal at Swindon, but since then manager Bert Head's team have picked up several useful points, including two at Maine Road a fortnight ago, and if the lads are to complete the double today they will need to be in top gear.

On Saturday last the game against Bury was disappointing from our point of view. In the first half the lads, playing at Carrow Road for the first time since 19th December, 1964, could not get going and were a goal down at the interval. The second half, with the team playing with more urgency, was a very different tale, and we had more of the play, and it was no surprise when Davies equalised in the 64th minute. After this we went all out for the winner but the Bury defence held out well and we had to be content with one point only. The Reserve team recorded yet another success by beating Crystal Palace by the only goal in a Combination game at Selhurst Park. Our goal was scored by Colin Shaw in the 21st minute. They have now collected maximum points from the last five games and have scored 15 goals against 5. The "A" team, who had to make a number of changes owing to injury, visited Sudbury in an Eastern Counties League match and were beaten by five goals to nil. This team, which included one fifteen and several sixteen year olds, put up a grand fight but were beaten by a very experienced home side. The young boys never gave up and the home crowd showed their appreciation at the end by applauding the players off the field, an action which was much appreciated. Geoff Barnard, who although beaten five times, played a magnificent game and made many fine saves. The "B" team, which included three trialists, visited Thorpe Village for an Anglian Combination game and were beaten by the odd goal of three. Stephen Deere getting our goal.

F.A. COUNTY YOUTH CHALLENGE CUP

Norfolk County F.A. are playing Hertfordshire in the 3rd round at Carrow Road on Wednesday next, 3rd February, 1965, kick-off 7.15 p.m. Six of our young players, namely, Jimmy Hewitt, Len Beane, Robert Eastick, Fred Basted, Terry Boast and Peter Taylor, have been selected to represent Norfolk, and it is hoped that you will turn up in good numbers to see this game. Norfolk have already beaten Huntingdonshire and Cambridgeshire to reach the 3rd round.



Heatrae

ELECTRIC WATER HEATERS

**Certain Winners at Home
or Away**

Heatrae Ltd., Heatrae Works, Norwich, Norfolk, NOR 29A

FACES FROM THE PAST



The present generation of Norwich City supporters should have no difficulty in recognising this face. Its owner left Carrow Road only two and a half years ago. Another clue? His wedding day was quite an event in Norwich City history!

The answer will be found on page 8

EASTERN COUNTIES NEWSPAPERS LIMITED

ATTENTION! — Ours is personal

Consult **THE SPORTS SPECIALISTS**

TOM STEVENSON (SPORTS) LIMITED

for all your Sports Requisites

**FOOTBALL ★ HOCKEY ★ BADMINTON ★ SQUASH
TABLE TENNIS and ALL INDOOR GAMES**

Only address: **SWAN LANE, off London Street, Norwich, Nor 57G**

Tel. Norwich 26413

★ THE GRASS SEED
FOR CARROW ROAD TURF

SUPPLIED BY

**Woods, Sadd, Moore
& Co., Ltd.**

GRASS SEED SPECIALISTS

12 Thorpe Rd., Norwich, Nor 97A
TELEPHONE: NORWICH 24195

ENJOY
YOUR
BEST
MEAL

**Lanchow
Chinese
Restaurant**

Open Daily (including Sundays)
12 noon to 11 p.m.

★ FULLY LICENSED

22 Prince of Wales Road, Norwich

Reserved Tables—Tel. Norwich 22771
Manager—Tel. Norwich 26391

Welcome to SWINDON TOWN

One of Norwich City's longest-standing rivals, Swindon Town, are today paying their 41st League (Southern and Football) visit to the city. Their first match here was in 1905-6 and they lost by the only goal. Most of the 39 league games since then have followed a similar pattern, for Swindon have proved a particularly hard side to beat. In fact, of the 40 games played here they have avoided defeat in 21, winning nine and sharing the points in the other dozen.

Last season, when City and Swindon renewed acquaintance at Christmas time after a break of three years, the games between the clubs were packed with incident. It was not until almost the last kick of the match at Carrow Road that Jim Oliver netted the odd one of five for the Canaries. At Swindon, two days later, it was Town's turn to net a late goal and escape with a 2-2 draw.

Swindon's away record this season has been almost entirely responsible for their failure to climb very high up the Second Division table. Biggest blot on their home record was a 6-1 trouncing by Newcastle; otherwise their performances at the County Ground stand favourable comparison with most in the section, though they also have the memory of their only-goal defeat by the Canaries on Boxing Day on their conscience.

Away from home the story has been very different. But City would do well to remember that there have been many times in the past when Swindon have produced

A GOOD KICK-OFF !!

SAVE REGULARLY WITH THE

NORWICH BUILDING SOCIETY

ST. ANDREW'S HOUSE, NORWICH, NOR 54A

TELEPHONE 21367



REGULAR MONTHLY SAVINGS EARN INTEREST AT 4%, AND WE PAY THE INCOME TAX.
A FIRST-CLASS MORTGAGE SERVICE IS ALSO AVAILABLE. SEND OR CALL FOR FULL DETAILS.

FISHERS (NORWICH) LTD.

★ REGISTERED
ELECTRICAL
CONTRACTORS

Estimates Free

for ALL PREMIER MAKES OF TELEVISION
WASHING MACHINES
VACUUM CLEANERS AND
DOMESTIC APPLIANCES

27 ST. ANDREW ST., NORWICH Phone 21207

the unexpected at Norwich. They would do well to remember, too, that since ex-Bury wing half Gordon Atherton arrived at the County Ground there has been a distinct improvement in Swindon's record. It includes away victories over Charlton and Manchester City.

Swindon manager, Bert Head, has won a reputation for his ability to find and develop young players. He has one of the most comprehensive youth schemes in the country and in recent years his youngsters have repeatedly hit the headlines.

Manager Head has made a number of signings this season, the most prominent, perhaps, being winger Keith East from Portsmouth. But it is for names like Ernie Hunt (star inside forward who has recently returned to the line-up after an operation), Mike Summerbee, Roger Smart and Don Rogers that Swindon are best known. They have their sprinkling of experience in men such as Owen Dawson (ex-Portsmouth), Ken McPherson (Newport County), and Bill Atkins (Aston Villa), but their successes of recent years have largely been brought about by their own enthusiastic youngsters.

Swindon's history goes back further than that of City. They were founder members of the Southern League in 1894 and reached the semi-final of the F.A. Cup twice in the early years of the century. And although it was only last season that they finally managed to throw off the shackles of the Third Division, they can claim to have numbered in their ranks one of the greatest of English footballers—inside forward Harold Fleming, who won numerous caps for his country.

For Softwoods, Hardwoods, Plywoods (including Marine Plywood), Wallboards, Insulating Boards, Laminated Plastics, Building Boards, including Glinex Board and Novobord. Write for details to

Head Office
COLEGATE
NORWICH

Jewson

Telephone:
29391 (10 lines)
(24 hour service)

Branches include:—Gt. Yarmouth, Lowestoft, Dereham, Fakenham, Diss, Lincoln, Earith, etc.

YOUR

Holiday Accommodation Problem Solved

HOUSEBOATS on River Ant at Wayford Bridge fully equipped, mains electricity, all facilities including a rowing dinghy.

COASTLINE LUXURY BUNGALOWS, near Broads on East Coast at Walcott, will sleep six persons, first-class fittings throughout. Private bathroom, flush toilets. H. & C. Mains electricity, refrigerator, cooker, heater, all found except personal towels. Television available. Secluded golden sands, bathing, fishing. Each Bungalow with its own grounds. Clubroom and Shop on site.

*INSPECTION
INVITED*

Apply

GEORGE MIXER & CO. LTD.
CATFIELD · GT. YARMOUTH · NORFOLK

Tel. Stalham 355/6
After Office Hours
Stalham 414

AUTOCAR

for Best

Motoring News

For LAWN MOWER Repairs and Service

HAND, MOTOR AND
PROFESSIONAL MACHINES

BEN BURGESS
GARDEN EQUIPMENT LTD.
43 King St., Norwich Tel. 28251



PREPARE FOR

by joining one or both He
on a non-profit-making b

(1) 3d. per week, for
Maternity, Optical
£1,000,000 paid in
£51,250 paid in grant

(2) Graduated scale o
towards the cost
Wards and Nursin

WRITE FOR FULL PARTICU

TH

NORFOLK AND

CONTRIBUT

38, St. Giles St

BRITISH RAILWAYS

Cheap Fares for Party Outings

If your party numbers eight or more for
a day outing by any train, British Railways
can offer:

- ★ 25% REDUCTION ON ORDINARY
RETURN FARE
- ★ GUARANTEED RESERVED SEATS
- ★ ARRANGEMENTS FOR MEALS,
COACH TOURS, ETC.
- ★ FREE RAIL TICKETS TO ORGANISERS
OF LARGE PARTIES (25 OR MORE
PASSENGERS)

REPRESENTATIVE WILL CALL IF DESIRED
ASK YOUR LOCAL STATION MASTER FOR
FULL DETAILS

Norwich City (Yellow Shirts, Green Collar and

(1) Keelan

(2) Kelly

(4) Lucas

(5) Butler

(7) Heath

(8) Bolland

(9) Allcock

Referee

Mr. J. R. Osborne

(Ipswich)



(11) Rogers

(10) Brown

(9) Summerbee

(6) Atherton

(5) McPherson

(3) Trollope

(1) Hicks

Swindon Town (Red Shirts, White Shorts)

★ Surgical Goods and Appliances

★ Jock Straps

Norwich Surgical Stores

55 PRINCE OF WALES ROAD

TELEPHONE: 26080

36 MAGDALEN STREET

TELEPHONE: 20613

THE CITY FOOTBALL CLUB SPRING GROVE L

CITY LAUNDRY (Nor

OAK STREET AND 105 DE

TELEPHONE 23224

DELIVERY AND COLLECTION OF LAUND

48 HOUR COMPREHENSIVE SERVICES OBTAINABLE F

East Anglia's Leading Garment and

PREPARE FOR THE UNEXPECTED . .

by joining one or both Hospital Contributory Schemes, organised on a non-profit-making basis and run by Voluntary Committees.

- (1) 3d. per week, for Cash grant whilst in hospital, Maternity, Optical, Dental and miscellaneous grants. £1,000,000 paid in benefits to Subscribers, 1948-1963. £51,250 paid in grants for amenities for Hospital Patients.
- (2) Graduated scale of subscriptions for grants to assist towards the cost of Treatment in Hospital Private Wards and Nursing Homes.

WRITE FOR FULL PARTICULARS OF BOTH SCHEMES TO

THE SECRETARY,

**NORFOLK AND SUFFOLK HOSPITALS
CONTRIBUTORS' ASSOCIATION,
38, St. Giles Street, Norwich, NOR 21E**

R. G. Pilch Ltd.

SPORTS SPECIALISTS

EQUIPMENT, CLOTHING and
FOOTWEAR for EVERY SPORT

★ *LISTS FREE*

1 BRIGG STREET, NORWICH
Telephone 28224

ts, Green Collar and Cuffs, Black Shorts)

(1) Keelan

(3) Mullett

(5) Butler

(6) Bradley

(9) Allcock

(10) Davies (11) Mannion



Linesmen

Mr. G. E. Barker

Red Flag

Mr. G. F. Squirrell

Yellow Flag

(9) Summerbee (8) Hunt (7) Shergold

(5) McPherson (4) Morgan

pe (2) Dawson

(1) Hicks

White Shorts)

THE EAST ANGLIAN TRUSTEE SAVINGS BANK

IN 1816

275 ACCOUNTS

FUNDS £1549

TODAY

300,000 ACCOUNTS

FUNDS EXCEED £50,000,000

HEAD OFFICE:

CASTLE MEADOW, NORWICH

OTBALL CLUB LAUNDERERS

LOVE LINEN HIRE

DRY (Norwich) LTD.

AND 105 DEREHAM ROAD

TELEPHONE 23224

ON OF LAUNDRY AND DRY CLEANING

SERVICES OBTAINABLE FROM THE ABOVE ADDRESSES

Garment and Towel Hire Specialists

EASTERN FOOTBALL NEWS

FOR ALL THE

CLUB NEWS

Sports Quiz

1. Who is the American heavyweight beaten by Billy Walker this week?
 2. Who scored his first century of the tour for England against South Africa in the fourth Test?
 3. Can you name the Brentford manager who announced this week that he will be taking over the managership of Kilmarnock?
 4. Who scored City Reserves' match-winning goal at Crystal Palace last Saturday?
 5. Back to boxing . . . Who successfully defended his European featherweight title in Rome last week?
 6. How many of the first-class soccer matches were knocked out by the weather last Saturday?
 7. Which England player was given out, and then recalled, in the fourth Test at Johannesburg this week?
 8. Who is Fulham's new manager?
 9. Which first-class county are Norfolk meeting in April in preparation for their Gillette Cup match against Hampshire?
 10. Who is the famous old Bristol City and England footballer who died last Saturday?
- (The Answers will be found on page 11)

Faces from the Past — Answer

GEORGE WAITES. Signed from Leyton Orient in January, 1961 (soon after playing a brilliant game against City at Carrow Road) in a part-exchange deal that involved Errol Crossan plus a reported fee of £10,000 going to Leyton. Waites made 40 League and Cup appearances for Norwich, scoring 11 goals. He made most of his appearances on the right wing, but also appeared on the left flank and at inside forward. His wedding day coincided with a City match at Brighton, and George, married in London in the morning, got to the ground with minutes to spare. Not retained at the end of the 1961-62 season, Waites re-joined Orient, later moved to Brighton.

What's On

ODEON

Sunday, 31st January, for 7 days

"FATHER GOOSE" (U)—Cary Grant, Leslie Carron.
For supporting feature please see Local Press.

THEATRE ROYAL

Sunday, 31st January, for 7 days

"FROM RUSSIA WITH LOVE" (A)—Sean Connery, Daniela Bianchi.
"FOLLOW THAT MAN" (U)—Sydney Chaplin.

FORTHCOMING MATCHES

Saturday, 6th February—

Football Combination v. PETERBOROUGH UTD. RES.; kick-off 3 p.m.

Saturday, 13th February—

Football League v. CHARLTON ATHLETIC; kick-off 3 p.m.

FOR **QUALITY**
IN YOUR SHOPPING BASKET
AND
DIVIDENDS
IN YOUR PURSE

SHOP AT



FOR EVERYTHING

34 GROCERY BRANCHES

29 BUTCHERY BRANCHES

SECOND DIVISION

Aug.	22	Swansea Town	H	2-1
	26	Derby County	A	1-0
	29	Rotherham United	A	0-4
Sept.	2	Derby County	H	5-2
	5	Ipswich Town	H	2-1
	9	Manchester City	A	2-0
	12	Crystal Palace	H	1-2
	16	Manchester City	H	4-1
	19	Bury	A	0-1
	26	Leyton Orient	H	2-0
Oct.	3	Charlton Athletic	A	1-2
	7	Preston North End	H	4-2
	10	Plymouth Argyle	A	0-1
	17	Bolton Wanderers	H	3-2
	24	Middlesbrough	A	0-2
	31	Newcastle United	H	1-1
Nov.	7	Northampton Town	A	0-0
	14	(1) Southampton	H	2-2
	21	Huddersfield Town	A	0-0
	28	Coventry City	H	1-0
Dec.	5	(2) Cardiff City	A	3-1
	12	Swansea Town	A	0-0
	19	Rotherham United	H	3-0
	26	Swindon Town	A	1-0
Jan.	2	Ipswich Town	A	0-3
	9	(3) Nottingham Forest	A	0-1
	16	Crystal Palace	A	0-2
	23	Bury	H	1-1
	30	(4) Swindon Town	H	
Feb.	6	Leyton Orient	A	
	13	Charlton Athletic	H	
	20	(5) Plymouth Argyle	H	
	27	Bolton Wanderers	A	
Mar.	6	(6) Cardiff City	H	
	13	Newcastle United	A	
	20	Northampton Town	H	
	27	(S.F.) Southampton	A	
April	3	Huddersfield Town	H	
	10	Coventry City	A	
	17	Middlesbrough	H	
	19	Portsmouth	A	
	20	Portsmouth	H	
	24	Preston North End	A	
May	1	(Final)		

FOOTBALL LEAGUE CUP

Sept.	23	Millwall	A	2-1
Oct.	21	Chester	H	5-3
Nov.	4	Workington	A	0-3

FOOTBALL COMBINATION

Aug.	22	Mansfield Town	A	0-1
	29	Arsenal	H	2-5
Sept.	5	Ipswich Town	A	0-2
	7	Colchester United	A	1-0
	19	Crystal Palace	H	1-0
	26	Peterborough United	A	0-0
Oct.	3	Leicester City	H	0-1
	10	Cardiff City	H	1-1
	17	Tottenham Hotspur	A	0-0
	24	Nottingham Forest	H	2-0
	31	Fulham	A	0-2
Nov.	7	Northampton Town	H	1-4
	14	Shrewsbury Town	A	3-2
	21	West Ham United	H	1-1
	28	Plymouth Argyle	A	0-2
Dec.	5	Tottenham Hotspur	H	1-7
	12	Mansfield Town	H	5-4
	19	Arsenal	A	1-0
Jan.	2	Ipswich Town	H	2-0
	16	Colchester United	H	6-1
	23	Crystal Palace	A	1-0
	30	Chelsea	A	
Feb.	6	Peterborough United	H	
	13	Leicester City	A	
	20	Nottingham Forest	A	
	27	Fulham	H	
Mar.	6	Northampton Town	A	
	13	Shrewsbury Town	H	
	20	West Ham United	A	
	27	Plymouth Argyle	H	
April	3	Cardiff City	A	
	10	Portsmouth	A	
	19	Portsmouth	H	
	24	Chelsea	H	

Fixtures Copyright by the Football League Limited (Season 1964/65)

'DRIVURSELF' at lowest possible cost

— in a Car from **ROBINSONS**

RIVERSIDE ROAD, NORWICH

— OF COURSE!

Call or Phone
NORWICH 27134 (3 lines)
for Full Details

NEW CARS — MOTOR CARAVANS — COMMERCIALS

BUSH BUILDERS (Norwich) LTD.

BUILDERS AND CONTRACTORS

ALL TYPES AND SIZES OF INDUSTRIAL DEVELOPMENT
PRIVATE HOUSING DEVELOPMENT
NORWICH AND COASTAL ESTATES

Mile Cross Lane, Norwich

Telephone 46326

FOOTBALL LEAGUE TABLE (DIVISION II)

	P.	W.	D.	L.	F.	A.	Pts.
Newcastle United	28	18	4	6	60	31	40
Northampton Town	27	12	11	4	36	31	35
NORWICH CITY	27	13	6	8	39	31	32
Bolton Wanderers	25	13	5	7	56	36	31
Crystal Palace	28	12	7	9	41	36	31
Southampton	26	10	9	7	58	43	29
Derby County	26	11	7	8	56	48	29
Coventry City	28	11	6	11	49	51	28
Preston North End	28	9	10	9	50	56	28
Plymouth Argyle	27	11	5	11	38	47	27
Ipswich Town	28	7	12	9	45	50	26
Manchester City	26	11	3	12	45	38	25
Rotherham United	25	10	5	10	48	46	25
Middlesbrough	27	9	6	12	49	49	24
Bury	27	8	8	11	38	41	24
Charlton Athletic	26	10	4	12	44	49	24
Swindon Town	27	11	2	14	43	54	24
Cardiff City	25	7	9	9	39	37	23
Swansea Town	27	7	8	12	42	54	22
Leyton Orient	27	8	6	13	37	54	22
Huddersfield Town	27	7	7	13	32	41	21
Portsmouth	28	6	8	14	34	55	20

Martin's

LAWN

GRASS SEED

SUPER MIXTURE.—The finest mixture obtainable, containing only Cumberland Marsh Red Fescue, Chewings Fescue and Agrostis Tenuis

per lb. 7/6
No. 1.—A mixture of the finer grasses containing no rye grass. Will make a carpet-like turf

per lb. 6/6
No. 3.—This is a mixture of the stronger-growing varieties with a percentage of rye grass, making a good serviceable turf

per lb. 4/6
No. 4.—A mixture which will give quick results and produce hard-wearing turf

per lb. 3/6
No. 6.—Quick-growing cheap mixture

per lb. 3/-
MARTIN & SON
Goat Lane, Norwich

Tel. 22784

REMOVALS BY Fitt Bros.

LIMITED

67-71 Ber Street, Norwich

TELEPHONE 20127

TRY

Gaywood Corner

FOR PAINTS

IRONMONGERY, GENERAL
HARDWARE, HARDBOARD
PANELS, IRON GATES AND
LINEN POSTS, EXTENDING
LADDERS, GARDEN TOOLS,
FISHING RODS AND REELS

55/57 Dereham Road, Nor 31J

Telephone : NORWICH 26358

LIST OF APPEARANCES AND GOAL SCORERS

	League and Cup		Combination			League and Cup		Combination	
	Apps.	Goals	Apps.	Goals		Apps.	Goals	Apps.	Goals
Allcock, T.	25	1	1	—	Kennon, N.	19	—	6	—
Bond, J.	—	—	—	—	Lucas, M.	24	1	—	—
Barnard, G.	—	—	5	—	T. Mensah	—	—	2	—
F. Basted	—	—	1	—	Mannion, G.	18	4	3	—
Bell, J.	—	—	19	3	Mullett, J.	29	2	—	—
Bolland, G.	31	18	—	—	Oliver, J.	2	—	19	6
Bradley, R.	1	—	16	—	Palmer, M.	—	—	—	—
Bryceland, T.	27	2	—	—	Punton, W.	14	—	4	—
Butler, B.	27	—	—	—	Sharpe, F.	4	—	14	—
Close, P.	—	—	1	—	Shaw, C.	3	—	18	8
Davies, R.	26	11	—	—	Stringer, D.	—	—	19	—
Fairchild, J.	—	—	18	1	Sutton, M.	10	—	10	5
Heath, D.	28	6	1	1	P. Taylor	—	—	5	—
M. Hedley	—	—	6	—	Tough, P.	—	—	6	—
Herd, T.	—	—	—	—	Way, E.	—	—	16	1
J. Hewitt	—	—	2	—	White, R.	—	—	—	—
Hill, K.	8	—	12	1	Willis, G.	—	—	16	—
Keelan, K.	12	—	10	—	Worrell, C.	2	—	1	—
Kelly, J. P.	31	—	—	—	Own Goal	—	1	—	2

SPORTS QUIZ ANSWERS

- | | | |
|----------------------|--------------------|-------------------|
| 1. Charlie Powell | 5. Howard Winstone | 9. Essex |
| 2. Peter Parfitt | 6. 19 | 10. Billy Wedlock |
| 3. Malcolm MacDonald | 7. Mike Smith | |
| 4. Colin Shaw | 8. Vic Buckingham | |

THE BEERS THAT SATISFY



Tolly Export

THE PERFECT PALE ALE

Cobnut

AS SWEET AS A NUT



DISTRIBUTORS: BARWELL & SONS, NORWICH

MASCOT COACHES

For all **COACH TRAVEL**

★ **SPECIAL EXCURSIONS TO ALL NORWICH CITY AWAY MATCHES**

LONG or SHORT JOURNEYS
at ANY TIME

LET US QUOTE FOR YOUR PRIVATE PARTIES

**" WE AIM
TO SATISFY "**

FULL PARTICULARS AND BOOKINGS :

Mascot Coaches, 1 Castle Meadow, Norwich

A	CHARLTON ATHLETIC MIDDLESBROUGH	N	TOTTENHAM IPSWICH TOWN
B	LEEDS UNITED EVERTON	O	WEST HAM UNITED CHELSEA
C	LEICESTER CITY PLYMOUTH ARGYLE	P	WOLVERHAMPTON ROTHERHAM UTD.
D	LIVERPOOL STOCKPORT	Q	DERBY COUNTY MANCHESTER CITY
E	MILLWALL SHREWSBURY TOWN	R	BARNLEY LUTON TOWN
F	PETERBOROUGH ARSENAL	S	BRISTOL CITY EXETER CITY
G	PRESTON NORTH END BOLTON WANDERERS	T	GILLINGHAM OLDHAM ATHLETIC
H	READING BURNLEY	U	HULL CITY BRISTOL ROVERS
I	SHEFFIELD UNITED ASTON VILLA	V	SOUTHEND UNITED MANSFIELD TOWN
J	SOUTHAMPTON CRYSTAL PALACE	W	WALSALL PORT VALE
K	STOKE CITY MANCHESTER UTD.	X	WATFORD COLCHESTER UTD.
L	SUNDERLAND NOTTS FOREST	Y	SOUTHPORT BRIGHTON
M	SWANSEA TOWN HUDDERSFIELD TOWN	Z	CHELSEA RES. NORWICH CITY RES.

HACKETT

(BUILDERS) LIMITED

168 Wroxham Road
Sprowston, Norwich

TELEPHONE 48179

BUILDERS and CONTRACTORS
ESTATE DEVELOPERS

★ **BOOK NOW**

for a
BUNGALOW, CHALET or HOUSE
on our latest development at
BRUNDALL VILLAGE

PRICES : £2,100 to £3,500 inclusive
of ROADS AND MAIN SEWER

THE
**RED
LION**
HOTEL

CROMER

Telephones—CROMER 2737
and 2243

FACING THE SEA

OPEN ALL YEAR

**DINNERS, WEDDINGS, PRIVATE PARTIES
CATERED FOR**

FREE GOLF on the ROYAL CROMER LINKS

FULLY LICENSED

FREE HOUSE

Resident Proprietors—MR. and MRS. TOM BOLTON

**WE INVITE YOU TO DISCUSS
WITH US YOUR MOTORING
AND FARMING REQUIREMENTS.**

WE ARE YOUR



MAIN DEALER

**FOR FIRST-CLASS SERVICE AND SALES
TELEPHONE US AT**

DEREHAM 28



DOMESTIC AND INDUSTRIAL

CENTRAL HEATING SCHEMES

★ ESTIMATES FREE

★ CASH OR TERMS

OLIVER RIX (NORWICH) LTD.

APPOINTED INSTALLERS FOR SHELL-MEX AND B.P. LTD.

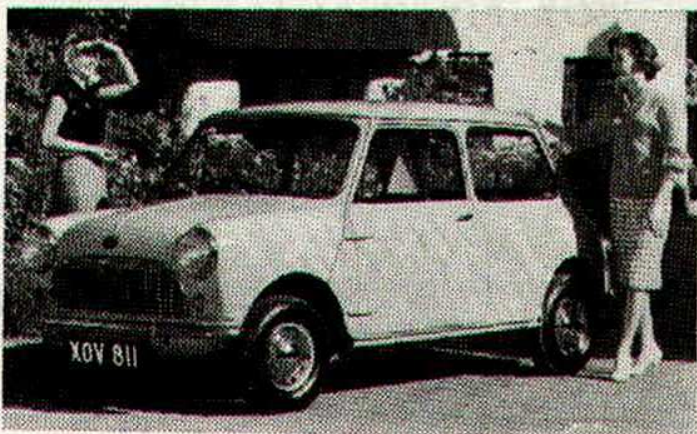
Telephone 27224/7

93/97 BER STREET



R. G. CARTER LIMITED, DRAYTON, NORWICH
Tel. Drayton 355 (5 lines)

**Make your
 next car an
 AUSTIN**



Call in any one of our depots listed below and have a look at the full range of Austins. Try any one that takes your eye. There's no obligation. H.P. terms easily arranged.

Mann Egerton

ESTD : 1898



A MANN EGERTON COMPANY

First-class SERVICE and REPAIRS

Let our factory-trained experts keep your car in tip-top condition. Highly skilled in every aspect of maintenance and repairs, they carry out each job efficiently and in the shortest possible time — and minimum cost. Try them and see.

AUSTIN DISTRIBUTORS

NORWICH, 5 Prince of Wales Road	Tel. 28383
YARMOUTH, St. Nicholas Road	Tel. 55431
LOWESTOFT, 97-101 London Rd. (S.)	Tel. 4441
FAKENHAM, Bridge Street	Tel. 2337
KING'S LYNN, Church Street	Tel. 3133